

Your special cargo is our passion
THINK BIG!

Over five decades of experience
Maximum security
Modern equipment with high payloads
Global route network
Direct contact with our experts

 Hapag-Lloyd



343-ton turbines, 32-metre-long crane booms, 14-metre-wide catamarans – for over five decades, **Hapag-Lloyd** has been transporting **special cargo** that does not fit in a standard container.

Be it as a one-off shipment of a special product or as a series of consignments for a major project: Hapag-Lloyd transports out-of-gauge cargo safely, quickly and reliably to its destination, as **pre-lashed** or **break-bulk**.



OUR SERVICE:

- Our team of experts manages every shipment individually and professionally
- Experts around the world reliably schedule your shipment in direct consultation with yourselves
- Surveyors accompany your valuable cargo during loading and unloading – for maximum security
- New and innovative equipment with high payloads: the right container for every shipment
- A fleet of modern container ships: to allow the transportation of individual items weighing up to 500 tons

At a glance: our special cargo

HARDTOP-CONTAINER

- 20' or 40' containers and 40' high cube containers
- Waterproof steel roofs that can be removed using a forklift
- Flexible loading via the roof and/or door
- Some containers have steel floors to accommodate heavier loads: these containers have a higher overall payload than those with wooden floors
- Containers with steel floors also have more lashing points that can be loaded with up to 2 tons



OPEN TOP CONTAINER

- 20' or 40' containers and 40' high cube containers
- Ideal for extra-high cargo: upper door header swivels outwards. The tarpaulin fitted to the container protects the cargo from water and moisture and is removable
- Some containers have steel floors to accommodate heavier loads: these containers have a higher overall payload than those with wooden floors
- Containers with steel floors have more lashing points that can be loaded with up to 2 tons



FLATRACKS

- 20' flat racks or 40' high cube flat racks
- Specially designed for heavy loads
- Up to 54-ton payload
- Several adjoining 40' high cube flat racks are used as the loading basis for break-bulk
- Various lashing points on the longitudinal beams and front ends that can be loaded with 5 tons



PLATFORMS

- 40' flat racks with folded head or end walls
- Ideal for extra-long loads that are stowed on deck
- Corner castings for lifting with front/side lifting gear and gooseneck tunnel at both ends of all 40' platforms
- Various lashing points on the longitudinal beams and front ends that can be loaded with 5 tons



o fleet

Construction	Inside Dimensions					Weights				Capacity	
9'6" high 40'		Length	Width	Height			Max. Gross	Tare	Max. Payload		
				Middle	Side						
Wooden Floor	mm	12,032	2,352	2,695	2,620	kg	32,500	5,200	27,300	m ³	76.3
	ft	39' 5 5/8"	7' 8 5/8"	8' 10 1/8"	8' 7 1/8"	lbs	71,650	11,464	60,186	cu.ft	2,695
Steel Floor	mm	12,020	2,342	2,693	2,618	kg	30,480	4,900	25,580	m ³	75.8
	ft	39' 5 1/4"	7' 8 1/8"	8' 10"	8' 7"	lbs	67,196	10,803	56,394	cu.ft	2,677
Steel Floor	mm	12,029	2,350	2,693	2,612	kg	32,500	5,000	27,500	m ³	73.9
	ft	39' 5 1/2"	7' 8 1/2"	8' 10"	8' 6 3/4"	lbs	71,650	11,023	60,627	cu.ft	2,610

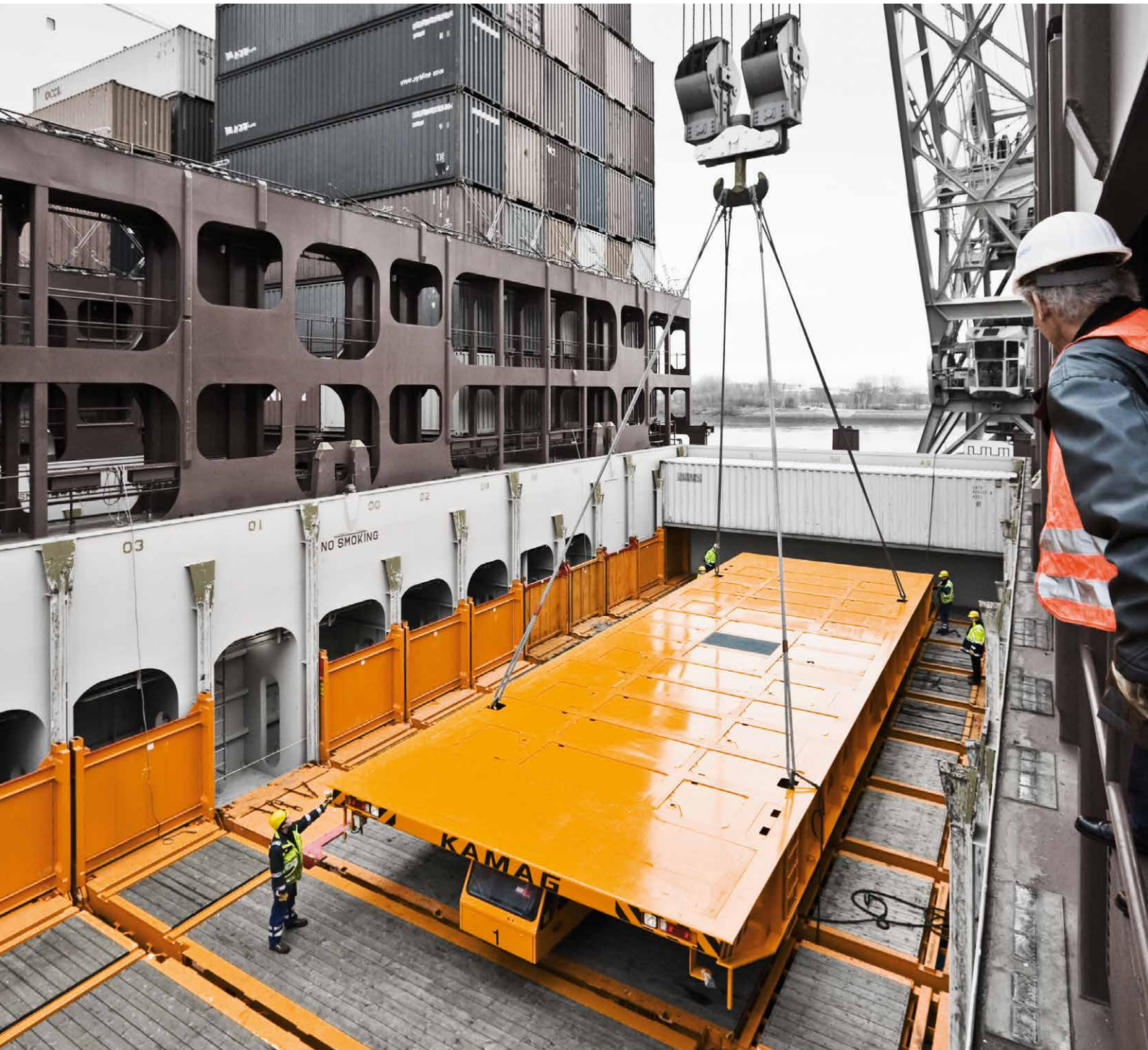
Construction	Inside Dimensions					Weights				Capacity	
9'6" high 40'		Length	Width	Height			Max. Gross	Tare	Max. Payload		
				Middle	Side						
Steel Floor	mm	12,029	2,352	2,683	2,649	kg	32,500	4,250	28,250	m ³	74.9
	ft	39' 5 1/2"	7' 8 5/8"	8' 9 5/8"	8' 8 1/4"	lbs	71,650	9,370	62,280	cu.ft	2,645

Construction	Inside Dimensions					Weights												
9'6" high 40'		Length between corner posts	Width between corner posts	Width over floor/bottom side rails	Height floor to top face (inside height)	Height of bottom		Max. Gross	Tare	Max. Payload								
													with flushfolding endwalls and softwood floors	mm	11,652	2,224	2,368	2,248
ft	38' 2 3/4"	7' 3 1/2"	7' 9 1/4"	7' 4 1/2"														
mm		2,226	2,347	2,264	kg lbs	55,000 121,253	5,900 13,007	49,100 108,246										
ft		7' 3 5/8"	7' 8 3/8"	7' 5 1/8"														
mm		2,178	2,370	2,258	kg lbs		5,850 12,897	49,150 108,356										
ft		7' 1 3/4"	7' 9 1/4"	7' 4 7/8"														
mm		2,148	2,358	2,264	kg lbs	60,000 132,276	5,800 12,787	54,200 119,489										
ft		7' 1/2"	7' 8 3/4"	7' 5 1/8"														

Construction	Inside Dimensions				Weights										
2" high 40'		Length	Width	Height of bottom		Max. Gross	Tare	Max. Payload							
												mm	12,192	2,245	648
ft	40'	7' 4 3/8"	2' 1 1/2"												
kg				55,000 121,253	5,900 13,007	49,100 108,246									
lbs															
kg				60,000 132,276	5,800 12,787	49,150 108,356									
lbs															

Please refer to the Hapag-Lloyd container specifications for further details and information.

Too big, too heavy?
Not for us!





One particularly heavy load was a gas turbine weighing 343 tons that Hapag-Lloyd shipped from Charleston, USA, to Busan in South Korea. The heavy cargo was lifted aboard and discharged by the use of contracted floating cranes at the loading port – and unloaded again at the destination port.



Train on board: Hapag-Lloyd transported two express train prototypes each with a length of 26 metres from Qingdao in China to Rotterdam, Netherlands. With the help of a purpose-built traverse, they were loaded and unloaded using container gantries.



32 metres long: the crane booms that Hapag-Lloyd transported from Rauma in Finland using its own short-sea service via Hamburg, Germany, to Shanghai in China. Belonging to a Finnish firm specialising in mineral extraction equipment, the cranes – together with the driver's cab and accessories that were loaded in separate wooden boxes – weighed over 75 tons. The crane booms were carefully secured on 40' flat racks.



A mere six tons – but enormously wide: a Lockheed P-38 Lightning with a wingspan of 16 metres. Hapag-Lloyd transported this delicate museum piece from Adelaide in Australia to Tilbury in the UK, where it is now one of the highlights of a military aircraft exhibition.



Precision landing on a flat rack: sometimes the cargo also arrives by air – just like this helicopter. A pilot accurately landed the Bell 429 on a 40' platform. A team of specialists then dismantled the rotor blades and secured the 2.4-ton aircraft, before lifting it on board. It then completed a seven-day voyage across the Atlantic to Europe on the „Montreal Express“.



Agricultural machinery for China: this 13-ton slurry spreader was loaded aboard pre-lashed in Denmark, then transported to Hamburg, Germany, via a short sea vessel, before continuing its journey on a Hapag-Lloyd mainline vessel. At 11 x 3.4 x 4 metres, such a cargo is almost commonplace, especially on scheduled services to Asia.



Your contacts

Our global team is on hand to manage your special cargo shipments and will be happy to provide advice.

Europe

Nadine Leonhardt

Ballindamm 25, 20095 Hamburg, Germany

E-Mail: oogEurope@hlag.com

Phone: +49 40 3001 -3269

Asia & Australia

Netalie Ng

200 Cantonment Road #08-03, Southpoint, Singapore 089763

E-Mail: oogAsia@hlag.com

Phone: +65 62285 -437

Middle East & Africa

Anthony Le Flem

Al Gharhoud Road, 55586 Deira Dubai, United Arab Emirates

E-Mail: oogMiddleEast@hlag.com

Phone: +971 4 2041465

North America

LaTonya McDaniel

11410 Greens Crossing Blvd., Suite 400, Houston, TX 77067, USA

E-Mail: oogNAmerica@hlag.com

Phone: +1 281 885 -7067

South America

Patricio Galaz

Plaza Sotomayor 50, Valparaíso, Chile

E-Mail: oogSAmerica@hlag.com

Phone: +56 32 2203409



In order to be able to quickly process your enquiry, we need the following information about your cargo:

- Type of goods / cargo (commodity)
- Type of packaging
- Dimensions (length, width, height)
- Total weight including packaging
- Number and position of lifting & lashing points
- Photos, drawings and supporting points (if available)

www.hapag-lloyd.com/specialcargo